

AN ISO 9001 CERTIFIED  
COMPANY



# LAXINA

PHARMA PRIVATE LIMITED

Sign of Trust



RUMINANT

PRODUCT FOLDER



Laxina Pharma Pvt.Ltd. is a part of Luton Group of Industries established since 2021 The company over a period of time has established its name in the National market by providing a very high level of customer satisfaction by our dedicated and committed team of people.

Laxina Pharma Pvt.Ltd. was established as a company to cater to ever rising need of quality products and services for the healthcare industry - both for Veterinary and Humans. We believe that animals have been catering to services of mankind and it is our duty to reciprocate back. Keeping this in mind we have kept our strong focus on Animal Healthcare...

Website :[www.laxinapharma.com](http://www.laxinapharma.com)

**Industries : Pharmaceuticals**

Company size 60-70 employees Headquarters Mumbai, Maharashtra Type Privately Held Founded 2021 Specialties Veterinary formulations and veterinary manufacturing

*Healthier & Fuller Life*

**Thanking You,**

**Laxina Pharma Pvt. Ltd.**

**Mumbai**

**1<sup>st</sup> Time In INDIA**

**Breaking the barrier for tough infections / NSD**

**AMOSAFE-40**

40

**Amoxycillin & Flunixin Injection for Vet.**

**Composition:**

Each ml contains:

Amoxycillin Trihydrate IP 80 mg

Flunixin Meglumine IP 40 mg

Water for Injections IP q.s

**Indications:**

- ◆ GI tract infections, urogenital tract infections, Reproductive tract infections
- ◆ Bacterial meningitis, surgical prophylaxis
- ◆ Mastitis ,pain, fever , inflammation , Colic/Muscular pain
- ◆ Skin & soft tissue infections

**Dosage & Administration:**

- ◆ **Calf, Sheep, Goat:** 1.1- 2.2 mg/ kg body weight
- ◆ **Cattle & Horse:** 1 mg -1.2 mg / kg body weight  
By IM & SC route Or as recommended by Veterinarian

**Presentation:**

50 ml & 100 ml.





## Exceptional Treatment Against Respiratory Infections

# LP-TYLO 20%

Tylosin Tartrate Injection 20% I.P (Vet.)

### Composition:

Each ml contains:  
Tylosin Tartrate I.P.(Vet)  
Equivalent to Tylosin 200 mg.

### Indications:

Tylosin Tartrate is effective against a large number of causative of disease (Streptococci, Corynebacteria, Pasteurella Antrax and Erysipelas, Bacillus & other) It is particularly effective against mycoplasma galisepticum (CDR), The drug is well absorbed from the digestive tract. Tylosin is very effective in the treatment of the chronic Respiratory Disease.

### Dosage & Administration:

Cattle, Sheep, Goat:

By IM, 1 ml/20 kg b. wt.

as recommended by Veterinarian



Presentation: 50 ml & 100 ml.



*An Ideal Supportive Therapy*

# ENROLAX - 20%

The Quality You Can Trust

## Composition:

Each ml contains:

Enrofloxacin 200 mg

## Indications:

- ◆ Respiratory tract infection.
- ◆ Urinary tract infection.
- ◆ Gastrointestinal tract infection
- ◆ Musculoskeletal infection (Bone & Joint infection)
- ◆ Mastitis
- ◆ Bacterial meningitis.

## Dosage :

- ◆ Each ml 20kg body weight intramuscular only as recommended by Veterinarian.



Presentation: 50 ml & 100 ml



# FLUXINA

## Flunixin Meglumine Injection

### Composition:

Each ml of Fluxina Contains:  
Flunixin Meglumine - 83 mg  
(equivalent to Flunixin 50 mg)

### Indication:

Common adverse effects of meglumine antimonate are anorexia, nausea, vomiting, malaise, myalgia, headache and lethargy, muscle, bone & joint pains

- have been described. endotoxemia & acute bovine mastitis, inflammation in endotoxemia.

### Dosage & Direction for use:

- Cattle Sheep & Goat  
1.1 mg to 2.2 mg Flunixin per kg body weight or 1-2 ml Fluxina for 45 kg body
- Dogs: 1 mg Flunixin per kg body weight given by slow I/V or I/M injection route  
Horse: 1.1 mg Flunixin per kg body weight or 1 ml Fluxina for 45 kg body weight, given by slow I/V injection route, once daily up to 3-5 days.  
Pigs: 1-2 mg Flunixin per kg weight given by S/C or slow I/V



Presentation: 50 ml & 100 ml



# NEMOSAFE FORTE

Nimesulide Pitofenone HCl & Fenpiverinium Bromide

## Composition:

Each ml Contains:

Nimesulide	BP	100 mg
Pitofenone HCl		2 mg
Fenpiverinium Bromide		0.02 gm
Benzyl Alcohol	I.P.	4% v/v (As Preservative)
Water of Injection I.P.		q.s.

## Indications:

Nemosafe Forte injection contains pitefenone, fenpiverinium & nimesulide which acts by powerful muscle relaxant action, controls smooth muscles contractions & potentiates the action of antispasmodic drugs and provides the relief from pain and fever respectively.

## Dosage :

- ◆ Calf, Sheep, Goat: 1-2 ml
- ◆ Cattle & Horse: 10-15 ml

By I/M

as recommended by Veterinarian



Presentation: 50 ml & 100 ml.



# ARYAMACTIN

Ivermectin Injection I.P. (Vet)

## Composition:

Each ml contains:

Ivermectin IP	10 mg
Benzyl Alcohol IP ( as preservative )	1.5 % v/v
Propylene Glycol IP	q.s.

## Indications:

Aryamactin injection is indicated for the effective treatment and control of internal & external parasites of cattle, sheep & camel.

## Dosage :

**Cattle:** 1 ml/50 kg body weight by S/C route.

1 Bolus 500kg body weight as recommended by Veterinarian.



Presentation: 50 ml & 100 ml & , Bolus



# INTAMICIN PLUS

Gentamicin Sulphate Injection I.P.

## Composition:

Each 2 ml. Contains:

Gentamicin Sulphate I.P

Eq. to Gentamicin 80 mg

Methyl Paraben I.P 0.15% w/v

Propyl Paraben I.P 0.02 % w/v

## Indications:

Gentamicin is indicated for the treatment of a variety of susceptible bacterial infections in swine, poultry, bovines and equines (eg., colibacillosis and peritonitis in swine; for mastitis, urinary tract disease, respiratory disease and septicemia in bovines)

## Dosage :

**Cattle, Sheep & Goat**

2 mg gentamicin/kg body weight,  
twice daily for 3-7 days.



Presentation: 50 ml & 100 ml.

***Breaking the Barrier of tough infections & NSD***



# MP-FORT

**Mefenamic Acid & Paracetamol Injection for Vet.**

## Composition:

Each ml contains:

Mefenamic Acid	I.P. 50 mg
Paracetamol	I.P. 150 mg
Benzyl Alcohol (As Preservative)	I.P. 2 % v/v
Water for Injections	I.P. q.s

## Indications:

- ◆ Fever/Pyrexia of Unknown Origin (PUO)
- ◆ As supportive with all kind of antibiotic therapy.
- ◆ For relief from pain following dehorning
- ◆ In mastitis treatment to reduce pain and inflammation
- ◆ Pain associated with surgical wound

## Dosage & Administration:

- ◆ **Calf, Sheep, Goat:** 1- 2 ml/ 10 kg body weight
- ◆ **Cattle & Horse:** 15 ml /400 kg body weight  
By IM Or as recommended by Veterinarian

## Presentation:

50 ml & 100 ml.



# Amoxicillin

## 15%

## Golden Shot for All Infection

## Amoxicillin Trihydrate Injection

# Amox-LA

### Composition:

Contains per ml:

Amoxicillin (as trihydrate) 150 mg

### Indications:

Amoxicillin 15% LA Inj. is effective against infections of the alimentary track, respiratory tract, urogenital tract, E-coli-mastitis secondary bacterial infections during the course of a viral disease in horse, cattle, goat, sheep, dog, & cat.

### Dosage & Administration :

For intramuscular injection. Shake well before use.

General dose : 1 ml per 15kg bodyweight

This dosage may be repeated after 48 hours if necessary. No more than 20ml should be injected into a single site.

**Presentation:** 50 ml & 100 ml multidose vial.



# The GOLDEN Shot For all infection

## L-CEF 4

Ceftriaxone - 3gm & 4gm for Injection Vet.

### Composition:

Each Vial contains:

Ceftriaxone Sodium I.P. equivalent to -  
Ceftriaxone 4000mg

Ceftriaxone

→ Destroy Resistant  
Bacteria

### Indications:

- ◇ GI tract infections, urogenital tract infections, Reproductive tract infections
- ◇ Bacterial meningitis, surgical prophylaxis
- ◇ Mastitis
- ◇ Skin & soft tissue infections

### Dosage & Administration:

- ◇ **Calf, Sheep, Goat:** 5 mg -10 mg/kg body weight
  - ◇ **Cattle & Horse:** 5 mg -10 mg/kg body weight
- By IM. IV & SC route Or as recommended by Veterinarian

### Presentation:

3 gm & 4 gm





## ***Breaking the Barrier of tough infections***

---

# **LP-TAZO** **4.5**

## **Ceftriaxone & Tazobactam Injection for Vet.**

---

### **Composition:**

Each vial contains:

Certrioxone Sodium I.P. equivalent to -

Ceftriaxone

Destroy Resistant Bacteria

+

Certrioxone 4000mg

Tazobactam Sodium U.S.P. equivalent to -

Tazobactam

Same structure  
As B-Lactamase  
Ring

Act as  
B-Lactamase  
Inhibitor

Tazobactam 500mg

---

### **Indications:**

- ◇ GI tract infections, urogenital tract infections, Reproductive tract infections
  - ◇ Bacterial meningitis, surgical prophylaxis
  - ◇ Mastitis
  - ◇ Skin & soft tissue infections
- 

### **Dosage & Administration:**

- ◇ **Calf, Sheep, Goat:** 5 mg -10 mg / kg body weight
  - ◇ **Cattle & Horse:** 5 mg -10 mg/kg body weight  
By IM, IV & SC route Or as recommended by  
Veterinarian
- 

### **Presentation:**

4.5gm



# Breaking the Barrier of tough infections

## LAXIFUR

### Composition:

Each ml contains:

Ceftiofur Sodium ( Sterile) IP

Eq. to Anhydrous Ceftiofur. 1000mg

Tazobactam Sodium ( sterile)

Eq. to Anhydrous Tazobactam. 125 mg

### Indications :

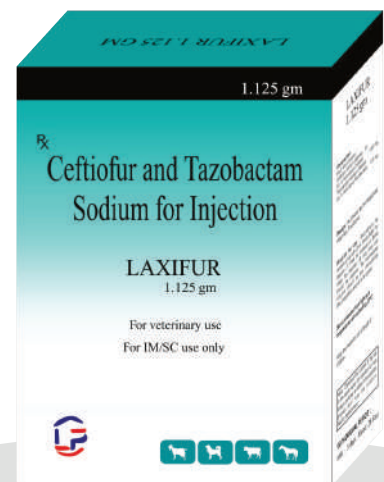
- \* Urinary tract infection, skin infection
- \* Respiratory tract infections, soft tissue infection and other systemic infections
- \* Sensitivity, Edema, Penetration into joints,
- \* Infection of the abdomen (Stomach area)
- \* Foot rot

### Dosage & Administration

- \* Cattle, Sheep and Goat:
- \* 1.1 to 2.4 mg/ kg body weight OD for 3-5 days by I/M route

### Presentation

1.125 gm



# An Ideal Supportive Therapy

## **M-PLEX**

### Nervine Tonic



#### Composition:

Each ml Contains:

Methylcobalamin	IP 500 mcg
Pyridoxine Hydrochloride	IP 50 mg
Niacinamide	IP 50 mg
Benzyl Alcohol (As Preservative)	IP 2 % v/v
Water for Injection	IP q.s

#### Indications:

- ◆ Liver disorders by Hepatitis, Jaundice, Fatty degeneration, parasitic anaemia, chronic diarrhea and general weakness.
- ◆ Also as an adjuvant in liver fluke infection in sheep, goat ,cattle

#### Dosage & Administration:

- ◆ **Calf, Sheep, Goat:** 2- 3 ml/ day
- ◆ **Cattle & Horse:** 10-15 ml /day  
To be given deep I/M or I/V route for 3-5 days Or as recommended by Veterinarian

#### Presentation:

50 ml & 100 ml.



*An Ideal Supportive Therapy*



# LP-PHOS

Sodium Acid Phosphate & Methylcobalamin Injection for Vet.

## Composition:

Each ml contains:

Sodium Acid Phosphate	I.P. 400 mg
Methylcobalamin	I.P. 100 mcg
Water for Injections	I.P. q.s.

## Indications:

- ◆ Prevention of transition period metabolic disorder
- ◆ Anaemia & general weakness
- ◆ Infertility & Low productivity
- ◆ Stress & Low immunity

## Dosage & Administration:

- ◆ **Calf, Sheep, Goat:** 5-12 ml
- ◆ **Cattle & Horse:** 10-25 ml  
By I.M./I.V. & SC route Or as recommended by  
Veterinarian

## Presentation:

50 ml & 100 ml.

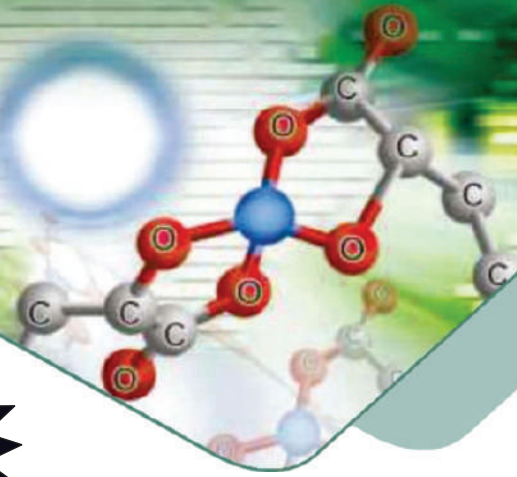




For Improved  
Fertility & Productivity

# RCMIN ADVANCE

Minerals, Vitamins & Herbal For Animal Feed



## Composition:

### Nutritional Value Per KG.

#### Minerals

Calcium	225 g
Phosphorus	127.5 g
Magnesium	6.0 g
Manganese	1.5 g
Zinc	11.6 g
Copper	4.2 g
Cobalt	150 mg
Iodine	325 mg
Sulphur	7.2 g
Chromium	10 mg
Potassium	100 mg
Sodium	4000 mg
Iron	1.5 g
Selenium	20 mg

#### Herbal Extracts

Satavari	100 mg
Jiwanti	100 mg
Ashwagandha	49 mg
Kalaungi	49 mg

#### Vitamins

Vitamin A	7,50,000 IU
Vitamin D3	1,50,000 IU
Vitamin E	250 mg
Nicotinamide	1000 mg
Vitamin C	300 mg
Vitamin H	1 mg
Vitamin K	40 mg
Vitamin B12	0.01 mg
Vitamin B2	30 mg
Vitamin B1	20 mg
Vitamin B6	20 mg
Folic Acid	10 mg

#### Amin Acid

L-lysine	63 mg
L-Methionine	30 mg

#### Specialities

Lactobacilus	500 mg
Sacchromyces	500 mg

### Recommendation:

30 g per Cow / Buffalo per day to be mixed in feed  
15 g per Calf / Sheep / Goat per day  
1 kg to be mixed per 100 kg of feed  
30 g per horse / Camel per day to be mixed in feed

### Advantages:

Maximises bio availability of minerals  
Maintains and improves  
Milk production significantly  
Improves milk quality  
Improves fertility  
Corrects lameness  
Reduces chances of Mastitis



Presentation: 1kg, 5kg & 25kg



# Cure For..... Pregnancy Sure

## CURE

**Each 10 ml. liquid Contains Polyherbs**

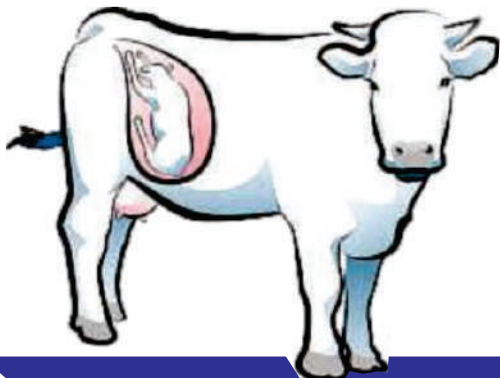
Abroma augusta, Rubia cordifolia, Cyperus rotundus, Cynodon dactylon, Terminalia chebula, Bacopa monniera, Paganum harmala, Saraca indica, Argyria speciosa, Putranjeeva roxburghii.

### **Mixing Ratio Recommendation:**

Administration 225 ml. Orally after A.I. with drinking Water  
This product is not intended to diagnose, treat, cure or prevent any disease. Indications

### **Indications**

Helps to maintain normal sperm structure  
Helps to increase the intra uterine life of Sperm  
Helps to increase the probability of fertilization



**Presentation :** 225ml



When situation Demands  
“DIFFERENT”

# LP-ZINC 15%

Glycine Chelated Zinc Supplement

## Composition:

Each 100 gm  
Zinc ( Chelated of Glycine Hydrate ) 15 %  
Carrier q.s

## Indication:

- ◆ Poor Growth
- ◆ Fastest recovery in FMD
- ◆ Speedy recovery of wound
- ◆ Immune Booster
- ◆ Prevention & control of hoof & skin disorder

## Benefits:

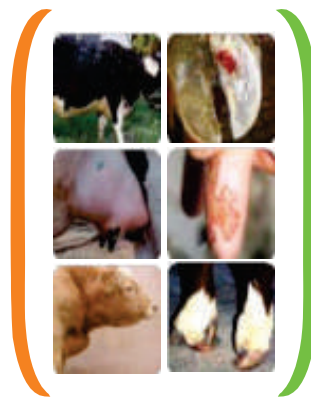
- ◆ Vital Supplement for metabolic function
- ◆ Maintains healthy cell
- ◆ Maintains oxidative balance
- ◆ Prevent growth retardation

## Direction for Use :

- ◆ Cattle, Buffalo, Horse: 5 gm to 10 gm/day
- ◆ Sheep & Goat: 3 gm to 5 gm/day
- ◆ Or recommended by Veterinarian

## Feed Mixing Ratio:

- ◆ Cattle, Buffalo, Horse:  
500 gm to 1 kg/ton of feed



Presentation: 100 gm & 1 kg

# ZINC-PLUS

झींक प्लस

Heat Enhance to Bring Animals in Heat



Glycine  
Chelated

## Composition:

Each 100gm

Zinc 20%, Copper 15%, Chromium 15%, Manganese 20%,  
Cobalt 15%, Biotin 20 mg, & Selenium 10 mg

## Indications:

- ◆ Infertility,
- ◆ In Repeat Breeding
- ◆ Silent Heat
- ◆ Delayed Ovulation
- ◆ Improve Hormones Level

## Benefits :

- Vital Supplement for metabolic function
- Maintains healthy cell & repeat breeding
- Maintains oxidative balance
- Prevent growth retardation

## Direction For Use :

RUMINANTS

Suckling steer calves.

Lamb, goat kids - 5 to 10gm per day for 10 days

Dairy cows & fattening steers- 20 to 25gm

Sheep & Goat - 10 to 15gm

## Presentation :

250g. & 1 Kg.





## A Complete Calcium Gel LC-4

# LC-4

Gel  
Veterinary

### Ionic Calcium - Vitamin D3 & Magnesium

#### Composition:

Each 300 gm provides

Ionic Calcium	45 gm
Vitamin D3	11,400 IU
Magnesium	3000 mg
Potassium	3000 mg
Carbohydrate	1,800,00 mg
Prohylene	54,000 mg

#### Indication:

- ◆ As an aid to prevent milk fever & associated complications
- ◆ To increase milk yield & other health
- ◆ As an aid to favor the normal contraction of uterus, normal calving & timely expulsion of placenta..
- ◆ Prevention of ketosis
- ◆ LC-4 GEL comprehensive nutritional supplement formulated
- ◆ To supply the essential nutrient to dairy animals

Appropriate overages of vitamins are added

**Storage:** Store in cool & dry place Protect from light.

#### Direction for Use :

- ◆ **Regular Use:** For higher milk yield administer
- ◆ one bottle per animal per day for 5-10days
- ◆ Or as directed by Veterinarian.
- ◆ **To Prevent milk fever:**
- ◆ Give one bottle at the first sign of calving & give another bottle 6 to 12 hours as needed or as directed by Veterinarian.
- ◆ A post calving dose of **LC-4 GEL** is very beneficial

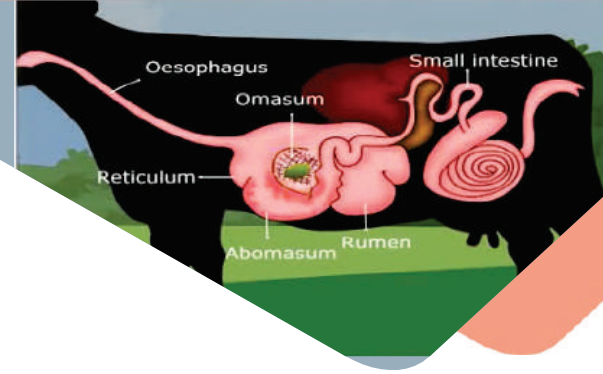


Presentation: 300 ml HDPE

*An effective combination for entire  
Digestive System*

# LP BOOST

## Digestives Bolus



---

### LP BOOST CONTAINS

Enzymes, Amino Acids, Ginger Powder, Cobalt, Copper, DL-Methionine, Liver Extract, Yeast Powder with Dextrose Feed supplement.

---

### Indications:

- ◇ Anorexia
  - ◇ Indigestion
  - ◇ Bloat
  - ◇ Debility
  - ◇ Diarrhea
- 

### Benefits:

- ◇ Improves digestibility of feed ingredients.
  - ◇ Probiotics helps to stabilize ruminal microflora.
  - ◇ Acts as a dietary aid in preventing digestive disorders.
- 

### Direction for use:

- ◇ **Cattle, Camel & Buffalo:** 2 - 4 bolus daily.
  - ◇ **Sheep, Goat & Calves:** 1 / 2 Bolus daily  
Or as recommended by Veterinarian.
- 

### Presentation:

4 Bolus / 10 Strips / Boxes

*Superrrrrrr*

**से उपर**

## L-CAL STRONG

# Vitamin Calcium Supplements

### Composition:

Each 100 ml **L-CAL STRONG** Contains:

Calcium	: 3500mg.	Cobalt	:50mg.
Phosphorus	: 1750 mg.	Chelated Copper	: 100mg.
Vit. D3	: 30000 I.U.	Potassium Iodide	: 500 mg.
Vit.B12	: 1000mcg.	Bioactive Chromium	: 100 mg.
Carbohydrates	: 40%	Jivanti	: 100 mg.
Chelated Zinc	: 500mg	Satavari	: 100 mg.

### Benefits:

- ◆ Ensure more milk, strong bones and cartilages.
- ◆ Improves production and lactating period in cattle.
- ◆ Better calcium absorption in the body for optimum milk production
- ◆ Minimize the metabolic disorders.
- ◆ Helps to improve overall development of animals

### Direction For Use:

- ◆ **Cow & Buffalo:** 50 ml -100 ml Daily
- ◆ **Calf, Sheep & Goat:** 20 ml - 40 ml Daily  
To be given orally as such or through drinking water or as recommended by veterinarian.

### Presentation:

500ml, 1 Ltr, 5 Ltr,& 20Ltr



Liquid Feed  
Supplement of Calcium,  
Vitamin D3, B12, with  
Satavari, Jivanti &

**Bioactive  
Cromium**

*Chelated*  
**L-CAL  
STRONG**

**एल-कॉल स्ट्रॉंग**



# Vital Liver Care

## LIV - S-135

## SILYMARIN

### LIVER TONIC WITH

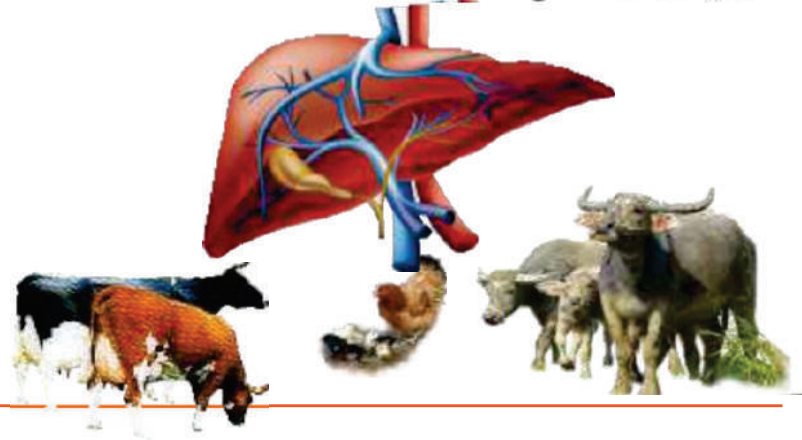
पशु व मुर्गियों के लिए सिलिमरिन

के साथ उत्कृष्ट लीवर आहार

#### Composition:

Each 30 ml. Contains :

Ferrous Gluconate	200 mg.
Ferrous Chloride	80 mg.
Nicotinic Acid	20 mg.
Nicotinamide	45 mg.
Thiamine Hydrochloride	5 mg.
Roboflavin	5 mg.
Calcium Lactate	300 mg.
Silymarin	135 mg.
Liver Fraction 2	150 mg.
(Derived from 3.75 gm of Fresh Liver)	



#### Benefits:

- ◆ Helps liver in transformation of drugs and toxins and protects liver from food and water related toxins and contaminants.
- ◆ Helps liver protein synthesis and helps in better growth and milk production.
- ◆ Improves liver metabolism and provides the animal with better feed utilization and milk fat%
- ◆ Helps in better calcium absorption for better bone formation and higher milk calcium.
- ◆ Helps to counter the hepatic damage due to deworming agents.

#### Dosage & Administration:

- ◆ Calf, Sheep, Goat: 10 ml - 20 ml
- ◆ Cattle, Buffalo & Horse: 50 ml - 100 ml

#### Presentation:

500 ml, 1 Ltr & 5 Ltr. Jar



*Multi Vitamin Supplement of  
Vitamin A, D3, E, H & B 12  
For Cattle and Poultry*

# LP TONE-H

## Water Miscible **Vitamin H** Tonic

### Composition:

#### Each ML Contains:

Vitamin H	25 mcg
Vitamin A	20,000 I.U.
Vitamin D3	10,000 I.U.
Vitamin E	50 mg
Selenium	6 mcg
Vitamin B12	2mcg
Excipients	qs.
Purified Water	qs.

Appropriate overage of vitamins are added.

### Recommended Usage

Bulls & Lactating Cattle	: 10 ml per day
Horse	: 10 ml daily
Poultry	: 8-7 ml / 100 birds daily

or as directed by the Veterinarian/Consultant.

### Benefits of L P TONE-H:

- ◆ Strengthen Udder Tissues & Muscles.
- ◆ Improve immunity & Reduce Stress.
- ◆ Reduce incidences of Mastitis.
- ◆ Maintain Shiny & Healthy Skin.
- ◆ Improve Breeding Performance in Bulls.
- ◆ Keep Hooves Healthy.

### Presentation:

250 ML, 500ML & 1 Ltr





# MB-PLEX

Supplement of Amino Acid & Vitamin for livestock & poultry

## Composition:

Each 5ml Contains:

Vitamin B1	7 mg
Vitamin B2	2.5 mg
Vitamin B6	1.0 mg
Vitamin B12	12.5 mcg
Biotin	25 mcg
Calcium Pantothenate	2.5 mg
Niacin	75. mg
Choline Chloride	10 mg
Methionine	10 mg
Lysine	20 mg

## Benefits:

Stimulates natural immunity. Effective against cage paralysis & lameness Ideal to combat various vitamin deficiencies, protects kidney and liver (Fatty Liver Syndrome). Improve growth and production. Ensure better feed utilization and performance.

## Dosage :

- Sheep, Calf, Goat: 10-15 gm
- Buffalo, Cow, Horse: 40-50 ml
- Layer: 10-15 ml/ 100 birds



Presentation: 1 ltr. & 5 ltr.



# GROGOLD TONIC - 1LTR

## Composition:

### Each 1 ltr Grogold Tonic Contains:

Vitamin A.....	1,000,000 I.U.
Vitamin D3.....	2,000,000 I.U.
Vitamin E Acetate.....	8 g
Vitamin K3.....	5 g
Vitamin B12.....	10 g
Pyridoxine HCl.....	2 g
Riboflavin - 5 - Phosphate.....	4 g
Thiamine HCl.....	3.5 g
D - Panthenol.....	15 g
Methionine.....	5 g
Choline .....	400 mg
Lysine.....	2.5 g
Histidine.....	900 mg
Arginine.....	490 mg
Aspartic Acid.....	1.45 g
Threonine.....	500 mg
Serine.....	680 mg
Glutamic Acid.....	1.16 g
Proline.....	510 mg
Glycine.....	575 mg
Alanine.....	975 mg
Cysteine.....	150 mg
Valine.....	1.1 g
Leucine.....	1.5 g
Isoleucine.....	125 mg
Tyrosine.....	340 mg
Phenylalanine.....	810 mg
Tryptophan.....	75 mg
Biotin.....	2 mg
Inositol.....	2.5 mg

## Indications:

- ◆ In case of acute and chronic deficiencies of Vitamins and amino acids.
- ◆ Providing essential elements for better growth, production and FCR.
- ◆ Different types of stress condition demanding production / deficiency states.
- ◆ Support the immune system and enhance immune response by increasing antibody production.
- ◆ For improvement in fertility, hatchability & liveability.

## Direction for use:

Sheep & Goat :- 10 to 20ml for 5 to 10 days

Cattle & Buffalo :- 50 to 100ml for 5 to 10 days



**Presentation:**  
500 ml, 1 ltr, 5 ltr

Customer believes us for GOOD QUALITY



**LAXINA**  
**PHARMA PRIVATE LIMITED**  
**Sign of Trust**

**Head Office**

10, Shubh Atika, Hatkesh Udyog Nagar, Mira Road (E) Thane- 401107.

---

Email: [info@laxinapharma.com](mailto:info@laxinapharma.com) | Website: [www.laxinapharma.com](http://www.laxinapharma.com)

Tel: +91 9702773035

